

Company Profile

Sable



SEPTEMBER 2015

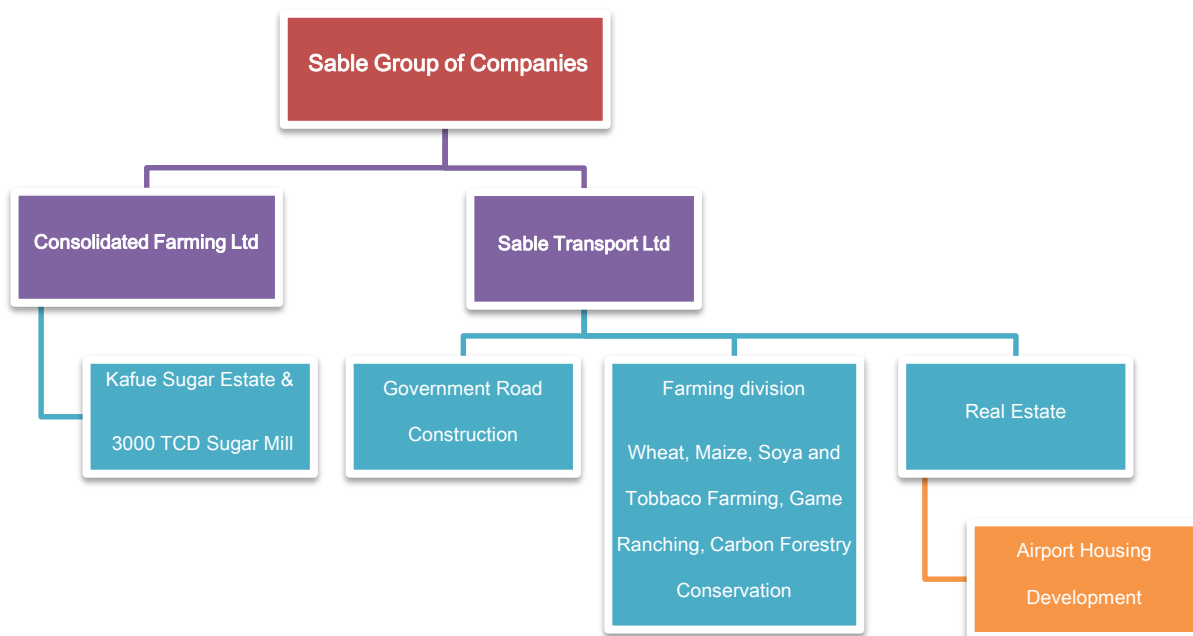
Sable Transport Ltd

Sable Transport Limited was incorporated in 1980 as a haulage company. Today Sable is one of the largest privately owned Zambian conglomerates with a diversified line of business and a strong asset base.

Sable has its headquarters in Lusaka. For more information than what is described below, its webpage is www.sabletransport.com. The company has three main lines of business:

1. Civil Engineering
2. Wheat, Soya and Maize Farming
3. Sugarcane Farming and Sugar Manufacturing

Company structure



Sable also operates the South African Bandag Tyre Retreading Franchise in Lusaka.

To support the various divisions, Sable has a fleet of 70 heavy-duty haulage trucks, which can carry 30ton loads. It has about 45 articulated dump trucks capable of carrying 30 ton loads. All trucks are deployed internally, with the exception of transport of copper for Konkola Copper Mines. The internal usage of the trucks is for carrying sugar to market, cement, bitumen and equipment to the roads, fertilizer and produce to and from the farms.

The shareholders of the company are as follows:

- Mr. Iqbal Y. Alloo – Managing Director
- Mr. Essof Y. Alloo – General Manager
- Mr. Nazir Y. Alloo – Operations Manager

The directors who have fundamental experience in the company's activities manage the company. All the Directors of the company are Zambians with Indian roots from Sinda in the Eastern Province of Zambia. The company employs 3,500 members of staff.

The Board of Directors:

Mr. Iqbal Alloo, the Managing Director operates from the head office in Lusaka. He provides overall management of the group with particular attention to the activities directly under Sable transport. Mr. I. Alloo is the primary point of contact for government and private sectors. His responsibility includes market analysis with exploration of business strategies to include initiation of new lines of business. The headquarter offices include all financial and business operations. Approximately 300 employees work from the headquarter offices.

Mr. Essof Alloo, the General Manager also operates from the Lusaka headquarter offices. Mr. Essof Alloo heads the Kafue Sugar operations. He manages the sugar farms and manufacturing processes. Kafue Sugar spans 6,000 hectares of irrigated sugar cane. In addition, Mr. Essof Alloo has responsibility for purchasing operations, vendor payments, and all administrative corporate operations. Kafue Sugar employs approximately 2,400 employees.

Mr. Nazir Alloo, the Operations Manager is in charge of the Eastern Province operations. In Eastern Province he oversees all road and farming projects, and at the Sinda farms he manages commercial farming ventures to include maize, soya beans, and wheat production. Furthermore, Mr. Nazir Alloo oversees the road operations, which include the Chipata Township, Chipata-Mfuwe, and Chipata-Lundazi roads. He also manages the Nyakolwe Game Ranch located in Eastern Province, one of the largest privately owned game ranches in the country. Approximately 800 employees work in Eastern Province.

1.1 Highway Construction Division

The civil engineering line of business focuses on building large-scale road construction projects. Sable has an in-house technical team as well as heavy earth moving machinery like graders, pavers, bulldozers, excavators, rollers, and compactors. The main client is the Government of the Republic of Zambia through its Road Development Agency.

Projects currently executed under contract with the government of Zambia are in excess of USD 100 million;

No	Project Name	Description
1	Kasama - Mprokoso Road Project	Upgrading of gravel road to bituminous blacktop
2	Petauke Township Roads Project	Construction of Asphalt roads on select Petauke Streets
3	Kabwe - Lusaka(Chibombo) Road Project	Repair and of Asphalt on existing sections
4	Chipata - Mfuwe Road Project	Upgrading of gravel road to bituminous blacktop

The company has executed road projects and bridges in excess of USD 120 million in the past five years. The company is a Zambian National Council for Construction Grade 1 approved contractor. The company executed the civil works of the foundations and superstructure for the 3000 tcd sugar mill at Kafue Sugar Estate. That project was delivered within schedule and budget. Below is a list of some of the major works previously carried out by Sable:

Project Name	Duration	Description
Kalungwishi Bridge	24 months	Concrete and steel bridge over the Kalungwishi River in Northern Province
Kasama - Luwingu Road	48 months	163 km of bituminous road surface
Formula 1 Select Urban Roads in Lusaka	24 months	30 kms of Asphalt Street Roads constructed to AASHO standards

Below is a picture of the road from Chipata to Mfuwe, which is one of Sable's multi million dollar road construction contracts.

Road layer works in Mfuwe



1.2 Wheat, Maize and Soya Farming

The farming arm under Sable's management includes farming of maize, soya beans, wheat, and cattle ranching. 7 farms are located across Lusaka, Central and Eastern provinces and have a total of 3,000 hectares under irrigation. The largest crops are Maize and Wheat. The grain produced is sold to local millers.

Farming operations

