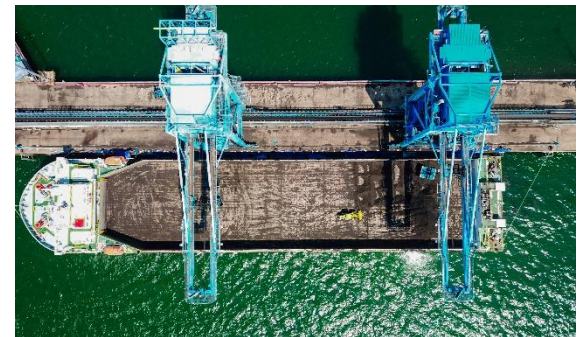
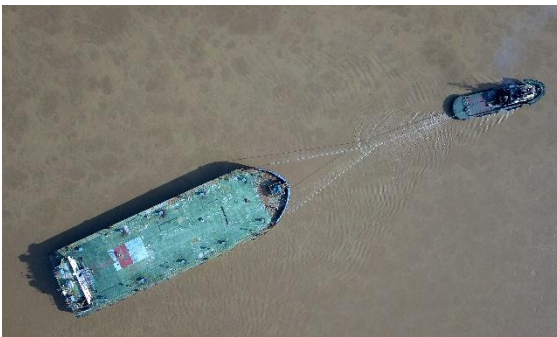




Sinarmas LDA Maritime & UAE Embassy in Jakarta

Company profile & point of discussion

27th August 2025



SLM profile



Sinarmas Golden Agri-Resources (GAR) is Indonesia company that operates in 14 countries and markets over 30 well-known consumer brands across 110+ countries, making it one of the world's largest palm oil companies

PACEMAR

Pacemar is France company that specialized in providing custom industrial maritime solutions with high-added-value activities and integrated services to its clients.



Sinarmas LDA Maritime (SLM) started operations in 2014 as a joint venture between Sinarmas and Pacemar. SLM is an integrated logistics provider and shipowner, offering bulk cargo transportation and port services across Indonesia.

Integrated commodities logistics provider

1 Profile

Sinarmas LDA Maritime (SLM) is an Indonesian shipowner, port operator and logistics provider, with several locations base: Jakarta, Surabaya, Paiton, Cirebon, Lampung, Rengat, Dumai, Jambi, Kotabaru, Kendari, Tanjung Redeb, Palembang and Singapore

SLM has achieved \$150 million revenue in 2024

SLM is an integrated logistics provider and ship-owner offering bulk cargo transportation, fuel trading & distribution (HSD & MFO), shore logistics, port services all across Indonesia and tourism through chartering Phinisi yacht

SLM owns / operates 114 vessels (self-propelled barges, tugs and barges, assist tugs), 250 road tankers, storage tanks, and employs 2,300 people

2 Our business sectors



Liquid bulk transportation



Dry bulk transportation



Port operations



Shore logistics



Phinisi

Sinarmas LDA Maritime – QHSE and Insurance

Our ship management

- IMO Company 9682681 certification
- ISO 9001
- ISO 14001
- ISO 45001
- ISM & ISPS

Our QHSE practice

- The QHSE department and staff are certified internal auditors by recognized training centers
- Yearly QHSE audit performed by LDA



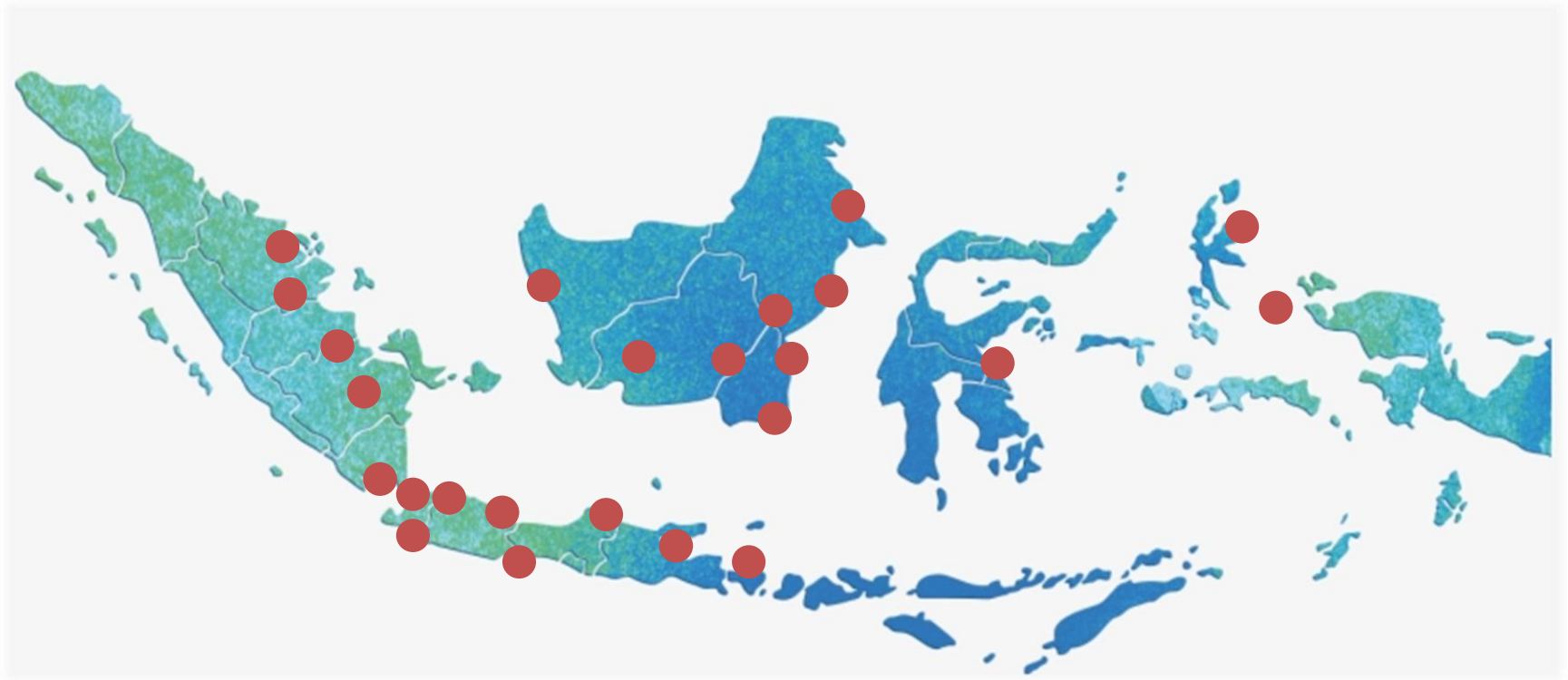
Insurance Coverage

SLM covers its fleet with:

- P&I – UK Club, one of world's leading mutual insurers of third party liabilities for ocean going vessels
- H&M – ASURANSI UMUM MEGA, reinsured with several entities including Royal Sun Alliance, Helvetia, etc. – all being first tier insurance companies
- Personal Accidents – CHUBB

The SLM fleet is insured by well-established insurers with comprehensive coverage tailored to meet our diverse operational needs

Operation Area



Dry bulk transportation

Key explanation

More than 25 years of experience in dry bulk transportation and transshipment in Indonesia

- Our operations began with coal barging and transshipments (using floating cranes) in 1991
- Annually, we transport a total of 7 million metric tons of coal and 2 million metric tons of nickel ore on long-haul routes, excluding transshipment activities
- As of today, we operate a fleet of 48 vessels with all flying Indonesian flag, consisting of
 - Self-propelled barges : 13 units
 - Tug and 230ft barges : 4 units
 - Tug and 300ft barges : 6 units
 - Tug and 330ft barges : 15 units
 - Tug and 365ft barges : 10 units

Strong track record with IPP, top Indonesian mining companies and smelters



Liquid bulk transportation

Key explanation

SLM owns, manages, and operates vessels transporting liquid bulk to assist our clients in the distribution process on domestic routes. Our fleet consists of 41 sets of tugs and barges, including:

- | | | | |
|-----------|-----------|-----------|------------|
| • 2000 MT | : 5 units | • 5000 MT | : 22 units |
| • 3000 MT | : 5 units | • 6000 MT | : 2 units |
| • 4000 MT | : 5 units | • 7000 MT | : 1 unit |
| | | • 8000 MT | : 1 unit |

All with double-bottom hulls to comply with international regulations

SLM transports around 2.5 million tons of cargo annually, consisting of CPO, FAME, CPKO, RBD-palm olein, glycerin, and more, with the size of the barges ranging from 2,000 DWT to 8,000 DWT



Customers of Liquid Bulk



Port operations and shore logistics

Key explanation

As an integrated logistics provider, SLM offers a comprehensive range of port operations and shore logistics services, including:

Port operations:

- Port management
- Stevedoring
- Pilotage and assist tugs (25 assist tugs)
 - < 2000HP : 2 units
 - 2000 – 3000 HP : 6 units
 - 3000 – 4000 HP : 17 units
- Crane operations and maintenance

Shore logistics:

- Road transportation of CPO, palm kernel, palm kernel shell, and coal (250 trucks)
- Storage tanks (14,000 MT)

Annually, SLM handles discharging of around 7 million tons of coal and 6 million tons of CPO products, piloting and assisting more than 4,000 vessels, and transporting more than 1 million tons of CPO products using trucks



Towage Services

Key explanation

SLM provides towage services across Indonesia, including:

- Salvage towage – emergency towage services available throughout Indonesia
- Short and long distance towage – our services include the relocation of various vessels (floating cranes, FSRUs, tankers, bulk carriers and container vessels)
- Offshore towage operations – provide towing services for jack-up rigs and other offshore structures



Phinisi Yacht

Key explanation

SLM operates a subsidiary company specializing in offering exceptional sailing experiences aboard Phinisi yachts. Our fleet of meticulously maintained vessels takes tourists on unforgettable journeys across the archipelago, blending traditional charm with modern comfort.



Point of discussion

1. Opportunities in Maritime Transportation Services

Exploring potential collaboration in maritime transportation solutions, including shipping services, port logistics, and Integrated supply chain offerings, with the flexibility of chartering arrangements where relevant.

2. Strategic Industries supported by the UAE Government

Understand UAE's current priority Industries

3. Potential for joint ventures & strategic partnership

Explore opportunities for JV models or co-development projects between the UAE and Indonesia in logistics, shipping, and related sectors

4. Investment Opportunities in Indonesia

Discuss the type of investments the UAE is seeking in Indonesia, and how Sinarmas LDA Maritime can align with these priorities.



Contact: marketing@sl-maritime.com



PT Sinarmas LDA Maritime
Sinarmas Land Plaza, Tower II, 3/F
Jl. M.H. Thamrin No 51, Jakarta 10350
www.sl-maritime.com

PACEMAR