



TOY MOCHI
MILANO

COMPANY PROFILE
2025 Edition

TOY MOCHI

MOCHI GELATO ARTIGIANALE: UN'ESPERIENZA DI GUSTO UNICA



Who We Are

Founded in Milan in 2019 from the vision of Francesco Ferretti, a young entrepreneur with a degree in economics from Bocconi University and an innate passion for gelato, Toy Mochi was born to unite cultural fusion and innovation.

Our mission is to bring joy and elegance to the frozen dessert category through a product that is refined, original, and versatile. Toy Mochi combines high-quality ingredients, craftsmanship, and a distinct aesthetic to meet the needs of the modern palate.

From Milan to the world, we serve restaurants, hotels, distributors, and gourmet retailers looking for unique and memorable desserts.

Key Facts

Founded: 2019

Headquarters: Milan, Italy

Products: Premium & Traditional Mochi Gelato

Target Market: HORECA, Gourmet Retailers, Distributors

Export Regions: Europe, Middle East (expanding)



UN'ORCHESTRA DI GUSTI

Mochi Tradizionali

A universe of flavor in over 15 creations. From timeless classics to the most exotic notes, each mochi is a superior taste experience, crafted with exceptional ingredients. With our vegan line, pleasure is for everyone. TOY MOCHI: discovery, in a single bite.



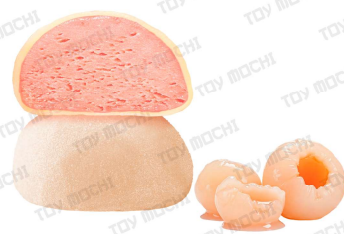
PISTACCHIO



CARAMELLO SALATO



CIOCCOLATO



LITCHI



NOCCIOLA



TÉ VERDE MATCHA



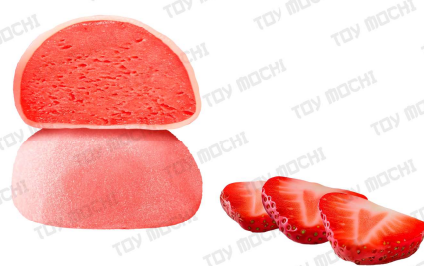
MANGO



SESAMO NERO



VANIGLIA



FRAGOLA

MochiDesign

Imagine three layers of pure pleasure: a creamy gelato heart, wrapped in soft rice dough, and coated in crisp chocolate. An explosion of textures in a single bite.

Choose the artisanal perfection of our Premium Mochi—true edible works of art.

OUR PROMISE: One bite to surprise you, one taste to fall in love.



TOY MOCHI

The TOY MOCHI philosophy is built on three fundamental pillars:

QUALITY

The rigorous selection of raw materials, meticulous attention to every stage of the production process, and the constant pursuit of perfection are the elements that guarantee the excellence of TOY MOCHI gelato.

SOSTENIBILITÀ

The company is committed to reducing its environmental impact by using recycled materials for its packaging and promoting responsible production practices.

INNOVATION

TOY MOCHI constantly explores new frontiers of taste, experimenting with innovative ingredients and techniques to create unique and surprising sensory experiences.

LOGISTIC

TOY MOCHI boasts a production capacity of 5,000 units per hour and impeccable logistics, ensuring temperature-controlled delivery both in Italy and abroad. The company is already successfully established in key Arab markets such as Dubai, Riyadh, and Doha. We ship by air freight or in temperature-controlled sea containers, demonstrating our capability to reach an international audience and meet the demands of a global market.



TOY MOCHI

A Future of Sweetness / OUR FUTURE
With its passion for craftsmanship, innovation, and quality, TOY MOCHI is ready to conquer new markets and bring the magic of mochi gelato to the entire world.

The company is committed to spreading the joy and pleasure of this Japanese delicacy, offering a unique and unforgettable taste experience to all its customers.





TOY MOCHI

MILANO



FEFFE MILANO SRL
Via Giampietro Lucini, 19 - 20125 Milano - Italia
www.toymochi.com
e-mail: f.f@toymochi.com
T. +39 3401362645

Follow us on Instagram:



[toymochiofficial](https://www.instagram.com/toymochiofficial)